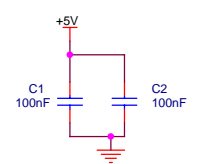


For +12V:
 1) SIP3 & SIP4 = 1K
 2) SIP2 = 22K



Sierra Automated Systems & Engineering Corp.
 2625 San Fernando Blvd.
 Burbank, California 91504

| | | |
|-----------------------------------|--|----------|
| Title RP6-5V | | |
| Size B | Document Number Turret Panel Board | Rev A |
| Date: Friday, October 13, 2006 | Sheet 1 | of 1 |